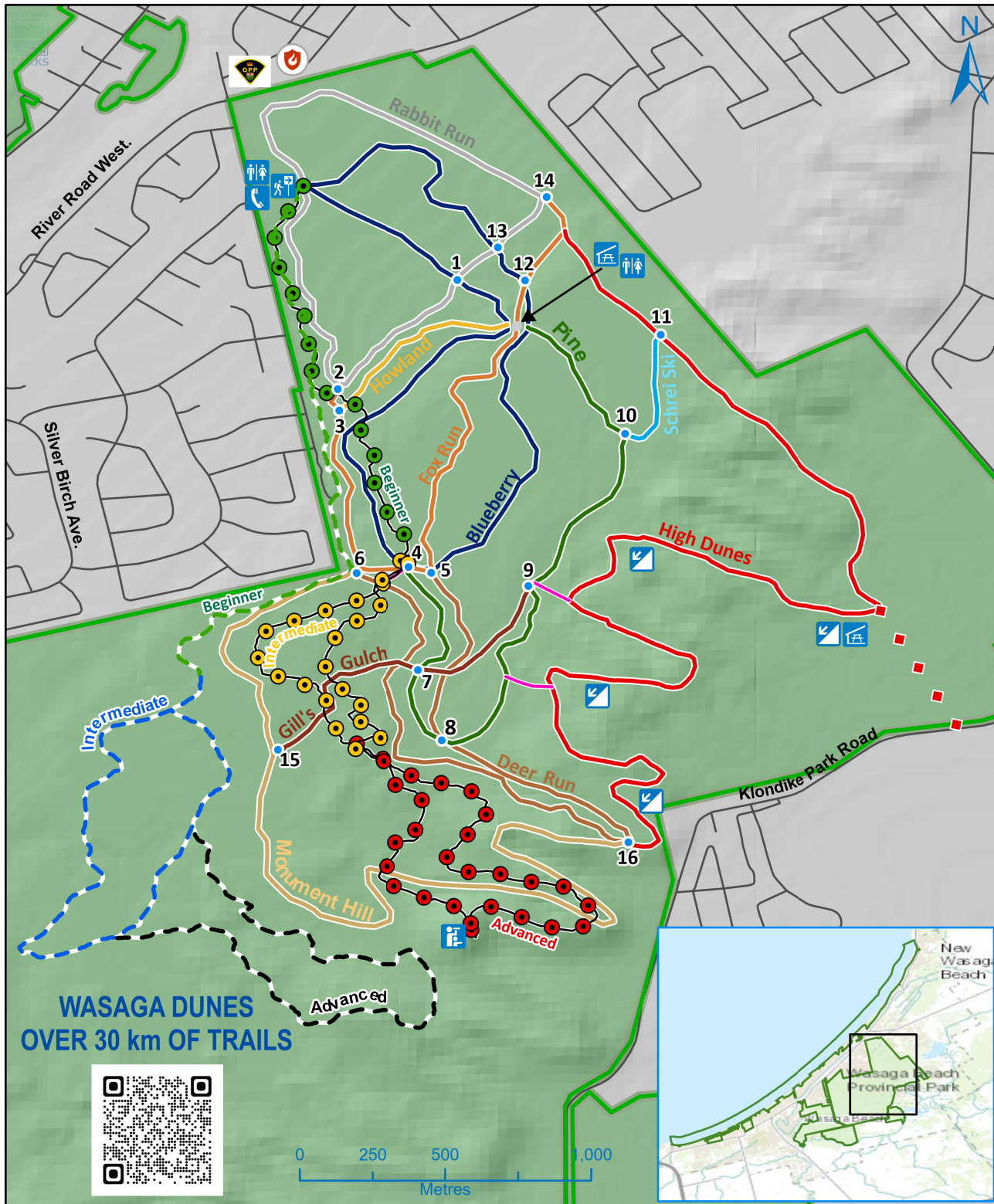




# Wasaga Beach



**WASAGA DUNES**  
OVER 30 km OF TRAILS



### Legend

- Park Boundary
- Trail Head
- Trail Marker
- Washroom
- Open Shelter
- Steep Hill
- Lookout Point
- Telephone
- Police Station
- Fire Station
- Road
- Connecting Trail
- Emergency Access Trail

### Ski Trails

- Novice
  - Blueberry 4.0 Km
  - Rabbit Run 2.7 Km
- Intermediate
  - Pine 2.7 Km
  - Gill's Gultch 1.0 Km
  - Schrei Ski 0.4 Km
  - Howland 0.6 Km
  - Fox Run 2.3 Km
- Expert
  - Monument Hill 3.3 Km
  - High Dunes 4.5 Km
  - Deer Run 2.7 Km

### Snowshoe Trails

- Beginner 2.1 km
- Intermediate 2.5 km
- Advanced 2.3 km

### Winter Bike Trails

- Beginner 1.5 km
- Intermediate 1.9 km
- Advanced 2.5 km

**Winter Only:**  
**Hours:** Daily 9am - 5pm  
**Phone:** (705) 429-0943  
**Address:** 101 Blueberry Trail, Wasaga Beach, ON L9Z 1E1  
[www.ontarioparks.com/skiportal](http://www.ontarioparks.com/skiportal)  
 ► Parking lot gates are locked at 5:00 pm.  
 ► Groomed trails are for skiers with a valid permit only.  
 ► Snowshoeing and winter biking is permitted on designated trails with a valid permit only.  
 ► Dogs and pedestrians are not permitted on designated trails at any time between December 15th - March 15th.

Base data derived from Land Information Ontario (LIO).  
 © 2024, King's Printer for Ontario.

This map is illustrative only. Do not rely on it as being a precise indicator of routes, locations of features, nor as a guide to navigation. The Ministry of Environment, Conservation and Parks (MCEP) shall not be liable in any way for the use of, or reliance upon, this map or any information on this map.

Map Projection: NAD83 UTM Zone 17N  
 Map Produced by: Ontario Parks, Southwest Zone  
 Date: January 8, 2024

