

Quetico Provincial Park - 2021 Fires

Fire Severity (Preliminary Analysis)

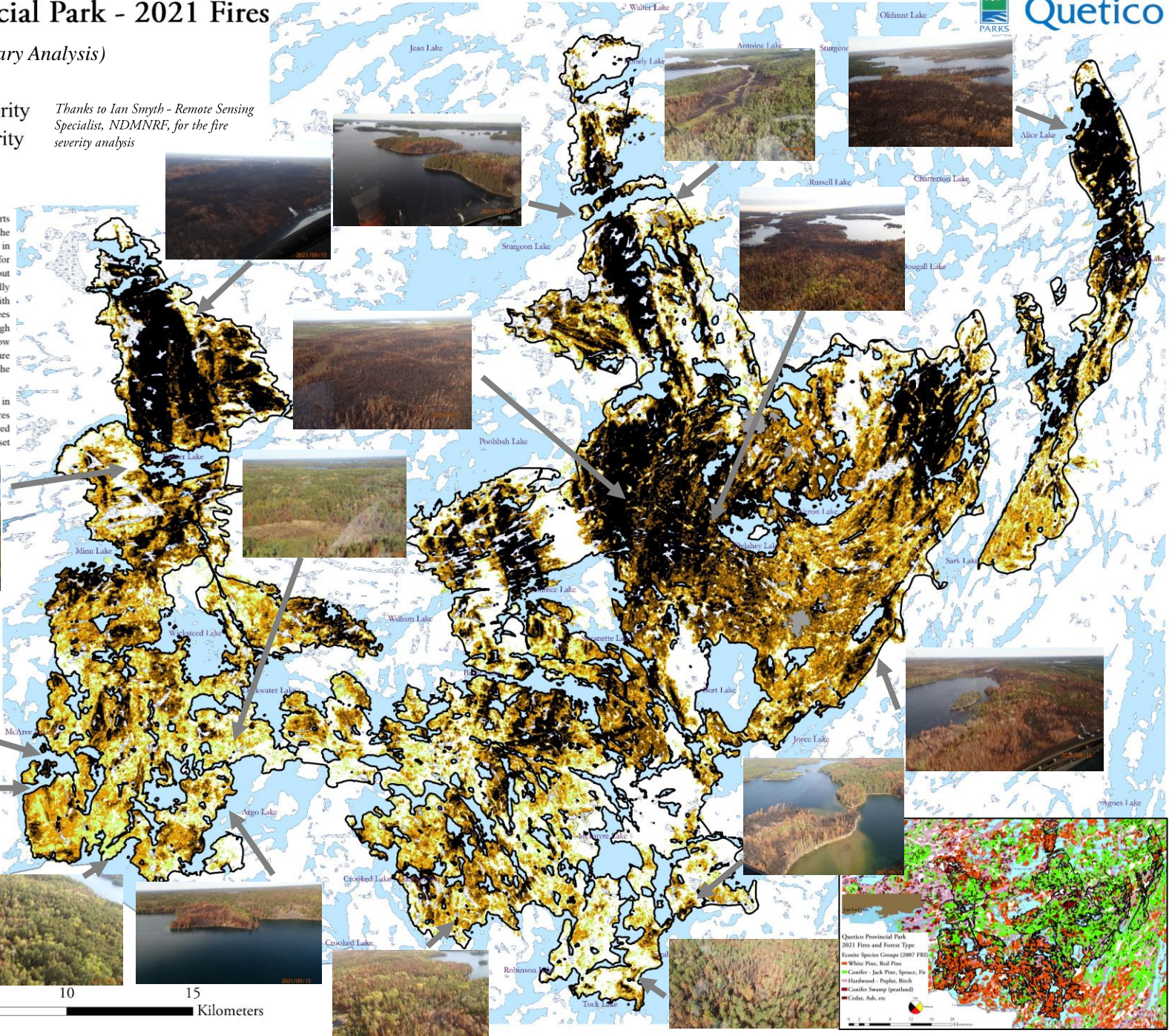
- High Severity
- Moderate-high Severity
- Moderate-low Severity
- Low Severity
- Cloud interference

In Quetico Provincial Park, there were 35 fire starts detected during the 2021 fire season. Almost all the burn area was a result of several fires that merged in the south-central area of the park accounting for approximately 50,000 hectares of fire area (about 14% of Quetico land area). The fire has been initially categorized into different levels of burn severity with 22% being high severity fire (i.e. most trees consumed by fire), 25% being moderate to high severity, 25% moderate to low severity, 15% low severity (surface fires that consume very few mature trees) and 18% as unburnt, residual areas within the burn perimeter.

Generally, lower severity fires tended to occur in areas of red and white pine with higher severity fires in jack pine and spruce providing the preferred conditions for regeneration of these species (see inset map).



Thanks to Ian Smyth - Remote Sensing Specialist, NDMNRE, for the fire severity analysis



Quetico Provincial Park
2021 Fire and Forest Type
Essential Species Groups (2007 FRI)

- White Pine, Red Pine
- Conifer - Jack Pine, Spruce, Fir
- Hardwood - Poplar, Birch
- Conifer Swamp (spruce/ash)
- Cedar, Ash, etc.